



# Zohr Family Funeral Home Inc.



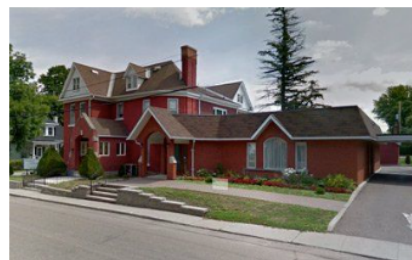
**613-757-2555**

11 Lake Street  
Killaloe, ON



**613-628-2334**

194 Jane Street  
Eganville, ON



**613-432-3651**

85 Munroe Avenue East  
Renfrew, ON

---

**Three Locations to Serve You**

---

***Grady Zohr***

*Managing Funeral Director – Killaloe*

[grady@zohrfuneralhome.com](mailto:grady@zohrfuneralhome.com)

***Madison McLean***

*Managing Funeral Director – Eganville*

[madison@zohrfuneralhome.com](mailto:madison@zohrfuneralhome.com)

***Dustin Zohr***

*Owner, Managing Funeral Director – Renfrew*

[dustin@zohrfuneralhome.com](mailto:dustin@zohrfuneralhome.com)

**Pricelist effective January 8, 2024**

**Office Fax – 613-432-5471**



[zohrfamilyfuneralhome](https://www.zohrfamilyfuneralhome.com)

***“5 Generations of Professional Services Since 1919”***

# ***Pricelist for Services & Supplies*** ***Descriptions & Definitions of Services***

**As of January 8, 2024**

## **Basic Professional Services**

This service includes professional consultations with our Licensed Funeral Director(s), including, but not limited to, expert advice on options to meet your needs. It also includes bookkeeping, scheduling of staff and vehicles, as well as our 24-hour availability and consultation service, which we provide to each and every one of our families.

This also includes the coordination and directing of the services of our staff and agents with those of the hospital, nursing home, home nurse, hospice, police or coroner.

## **Arranging & Coordinating Rites & Rituals**

This service includes but is not limited to the work done by our Licensed Funeral Director(s) on behalf of the contract purchaser. This would include the coordination and directing of the services of our staff and agents with those of the cemetery, crematorium, church, rental hall/ public space clergy or others involved with the successful fulfillment of the purchased contract.

## **Visitation Staff**

This service includes but is not limited to staffing, supervision, cleaning, and the maintenance of the premises. This service may include receiving and arranging of floral tributes and coordination of rites and services that may occur during visitation.

## **Offsite Visitation Staff**

This is the necessary use of staff to make ready all the preparations required to go to and from an offsite visitation area such as a church, or community hall.

## **Ceremony Staff**

This service includes but is not limited to the preparations and staff to direct and assist with the funeral service. This may include arranging floral tributes, seating at the church or chapel, as well as the cemetery or crematorium.

## **Graveside Staff & Equipment Services**

This service includes but is not limited to the equipment, preparations and staff needed to set up at a gravesite in a cemetery. This may include dressing the grave, arranging floral tributes, and clean up following services. This can be for interment of a body or inurnment of cremated remains.

## **Reception Staff**

This service includes but is not limited to the preparations and staff to direct and assist with the reception service. This may include set up of table and chairs, serving utensils, service of food and clean up of reception facility.

## **Delayed Interment**

This is a charge for which the family has chosen to delay interment, for reasons such as having luncheon before heading to the cemetery, or choosing a specific day for interment.

## **Placement of Cremated Remains In Family Urn**

This service is the placement of a loved ones cremated remains by our staff into and urn supplied by the family.

**Staff & Vehicle For Spring Interment**

Many of our area cemeteries choose not to provide interments during the winter months (e.g. December – April weather depending). Dates may vary depending on the cemetery. This fee covers the cost of transporting the remains from the winter storage vault to the cemetery and coordinating activities included, but not limited to, arranging date and time with family, cemetery and clergy if required. It also includes ordering of the grave marking, opening and closing, coordinating delivery and set up of burial supplies.

**Scattering of Cremated Remains**

We will scatter cremated remains in accordance with Ontario and municipal laws and by-laws. For more information on scattering, you may refer to the Bereavement Authority of Ontario's Consumer Information Guide, or speak with one of our licensees.

**Sunday/ Statutory Holiday Service**

This charge is for additional staffing on statutory holidays.

**Saturday Service**

This charge is for additional staffing and facilities on a Saturday as it is our most common day to hold services for families.

**Embalming**

This includes the disinfection and preservation of all or part of a dead human body, with the use of chemical means. Embalming is not required by law, however funeral arrangements selected with viewing or the prolonged sheltering and care of the deceased from the time of death until final disposition, embalming is highly recommended by the funeral home. Embalming can ONLY be performed by a Class 1 Funeral Director licensed under the Bereavement Authority of Ontario. This service also includes setting of features, use of cosmetics, placing or removing jewelry and clothing on the deceased before or after placing the deceased in the casket or container selected.

**Basic Preparation**

This service includes the external cleaning of the deceased human body, setting of features for identification purposes, use of cosmetics, placing or removing jewelry and clothing on the deceased before or after placing the deceased in the casket or container selected.

**Facilities for Preparation/Embalming/Sheltering**

This charge is for the use of the facilities to prepare, shelter or embalm a dead human body. This also includes the necessary equipment and supplies to keep us in compliance with all the legal requirements of the Health Unit and the Funeral, Burial and Cremation Services Act, (2002) for our annual licensing. This charge applies for all dead human bodies that come into our care at the funeral home for any purpose.

**Extended Sheltering of Remains**

This service is charged daily after 4 days in our care in order for our licensed funeral directors to take extra steps in the safe storing of a dead human body for the purpose of visitation, service or burial.

**Removal of Pacemaker**

This is a mandatory charge for any deceased human who has a pacemaker or medical device implanted. Pacemaker/devices must be removed before cremation and can only be done by a medical professional or a Class 1 Funeral Director licensed under the Bereavement Authority of Ontario.

**Decedent Care & Casketing**

This service is provided to all families and we ensure respectful care and casketing of the deceased at all times for when the dead human body or cremated remains are in our care.

### **General Facilities**

This is a standard charge made by us in all cases for the use of our facilities, including all our areas that are open to the public within our funeral home such as our arrangement office, casket selection room, lounge, and other facilities and equipment required to operate as a licensed funeral home. This encompasses all conferences for collection of information, clothing, pictures, and also follow up for extended help, questions and concerns.

### **Documentation**

This charge is for the obtaining and completion of the documentation legally required in connection with the final disposition of a deceased person. Obtaining proper documents and necessary information for the registration of the death under the Vital Statistics Act is mandatory for every death in Ontario. As well we provide Funeral Director's Proof of Death Certificates for the handling of the affairs of the estate.

### **Aftercare Services**

This service is an exclusive aftercare program completing everything involved in your loved ones estate. Paperwork including notification to CPP & OAS, CPP Death Benefit, health card, drivers license and Social Insurance Number cancellation. We also complete life insurance claims as well as assist with property tax, water, sewage and utilities in the deceased's name.

### **Online Services**

For your online presence for your death notification on our website ([www.zohrfuneralhome.com](http://www.zohrfuneralhome.com)). The online death notice has no expiration date and will stay on for as long as our website is active. This also gives access to the family login on our website to see condolences posted to your family and the ability to send an e-thank you via email.

### **Live Stream or Video Record**

By request, we are pleased to offer a live stream or video recorded service to your family in the event your family is unable to attend or would like an everlasting memory. The live stream will be published onto your loved ones Book of Memories at [www.zohrfuneralhome.com](http://www.zohrfuneralhome.com) for all to view.

Live stream or video recorded services can be posted for the public or shared privately between family members. We can also download a recorded service to a USB for a keepsake or to send to family and friends.

### **Visitation Facilities**

This includes the use of our facilities and equipment for the reception of family and friends. Equipment that may be provided could include religious equipment, register stand, flower stands, memory boards etc.

### **Offsite Visitation Equipment**

This includes the preparation and rental of any and all required equipment provided by our funeral home to be used at the place of visitation whether that is a church, community hall or such. Equipment that may be provided could include, flower stands, register stand, memory boards, religious equipment etc.

### **Funeral Day Facilities**

This includes the use of our premises and equipment the day of the funeral. The funeral home opens 1½ hours before the service time, whether the funeral is at a church or in our chapel.

### **Chapel Service**

This includes the use of our premises and equipment inside the chapel to preform a funeral or memorial service.

**Reception Facilities**

This includes but is not limited to the use of our facilities to host a reception of friends and family. This includes the use of equipment and furniture in said area such as tables, chairs, coffee makers, water coolers and serving utensils.

**Local Transfer of Remains**

This includes our professional staff to transfer the deceased from a location to a requested destination (most often funeral home) within a distance of 40 km. This would include the coordination and direction of the services of our staff and agents with those of the hospital, nursing home, cemetery, crematorium, church, clergy or others involved with the successful fulfillment of the purchased contract.

*Additional Charges Apply When: Travel beyond the first 40km one way.*

**Funeral Coach**

This vehicle is used for, but is not limited to the transportation of the deceased while in a casket or container within a 40km distance. Most often used for transportation from our facility to church/place of service to cemetery or crematorium for final disposition.

**Clergy/Lead Vehicle**

This vehicle is used for leading the funeral procession and may include transportation of the clergy to the place of funeral, or place of final disposition for the deceased.

**Utility Vehicle(s)**

These vehicles are used for such tasks as procurement and registration of documentation, delivering flowers, grave equipment distribution and retrieval etc. Vehicles can also be equipped to carry all P.P.E. (personal protective equipment) and follows all necessary legal requirements of the Health Unit and the Funeral, Burial and Cremation Services Act, (2002) to perform a transfer of a dead human body not placed in a casket or container.

**Limousine**

This vehicle is used during the funeral procession and may transport the family from our facility to the place of funeral, and/or place of final disposition and return.

**Family Vehicle**

This vehicle is used during the funeral procession and may transport the family from our facility to the place of funeral, and/or place of final disposition and return.

**Pallbearer Vehicle**

This vehicle is used during the funeral procession and may transport the pallbearers from our facility to the place of funeral, and/or place of final disposition and return.

**\*NOTE:** *Beyond the first 40km a charge of \$2.00/km one way will be added for the use of any vehicle.*

**Stationery Packages**

We are very proud to offer personalized styles of stationery to our families. Packages include a register book, acknowledgement cards, memorial candle and memorial cards. May also include praying hands cross or crucifix and portfolio, service depending.

**Disbursements**

There are a number of services and fees that we can arrange on behalf of the purchaser at cost at the time of need. For example, death notices in newspapers, opening and closing fees at cemeteries, fees at the crematorium, Coroners fees, and honourariums etc.

Current examples:	Cremation Fee at Capital Crematorium Inc.	\$895.00		
	Coroner's Certificates	\$75	Clergy Honorarium	\$250 - \$500
	Mass Fee	\$200	Organist / Music	\$100 - \$200

## **Pre-Arrangement Funding and Funeral Payments**

***Pre-arrange today with one of our Licensed Funeral Directors***

Grady Zohr, Funeral Director  
grady@zohrfuneralhome.com

Madison McLean, Funeral Director  
madison@zohrfuneralhome.com

Dustin Zohr, Funeral Director  
dustin@zohrfuneralhome.com

## **6 Reasons To Pre Arrange Your Funeral**

1. Design The Service You Want
  - Sit with one of our Licensed Funeral Directors and design the service that you want for yourself
  - You can make changes to your services at anytime
2. Guaranteed Prices
  - You pay the prices in place at time of your pre arrangement. Anything arranged is a guaranteed price meaning a funeral home cannot by law ask you for more money at the time of passing (This excludes things not pre arranged such as funeral disbursements)
  - Wide selection of options for any budget
3. Remove The Burden From Your Loved Ones
  - Many families don't talk about death and their final wishes. Putting your final wishes down on paper with the funeral director removes the burden and stress from your family when trying to honour your life
4. Handle Your Own Finances
  - You select how much you wish to spend and have the ability to work within a budget
  - Don't leave your final care bill to your family; you have the ability to relieve financial stress from your family in an already stressful time for them
5. Transferability
  - Moving in or out of town?
  - We can transfer your trust account or policy to or from the care of any funeral home you choose
6. Peace of Mind
  - Your final wishes are in place
  - Your money is kept in a trust account under your own name
  - You can rest assured that when the time comes, you and your family will be taken care of

### **Payment, Financing and Funding**

We are proud to offer various payment and funding options to our clients. We accept cash, cheque, bank draft, debit or credit cards.

#### **At-need Payment**

Unless otherwise specified, the price of service fees are due on signing of the contract. Following signing of the contract the purchaser receives a 30 day grace period. Following such time an interest rate of 1.25% (15% per annum) will be charged to the outstanding balance. This includes disbursements made on the behalf of the purchaser. Payments towards funeral expenses may be made in cheque, bank draft, cash or e-transfer.

#### **Credit Card Payments**

A processing fee of 2.4% will be charged to the card holder for any payment made by a credit card. (processing fee is none refundable in the case of a cancelled contract)

#### **Pre-need Payment**

Payments may be made in void cheque, PAD (Pre Authorized Debit) or EFT (Electronic Funds Transfer)

#### **Financing**

We can tailor a plan to best fit your financial needs. From single payment plans to automatic monthly bank withdrawals designed to meet everyone's budget concerns. Our Licensed Funeral Directors can sit with you and your family to find a payment plan that is suitable for you.

#### **Funding**

Each funding option is specifically designed to fit any budget, when prepaying services and supplies. When prepaying, you pay for the services and supplies that you have selected at today's prices and the money will be used when the services and supplies are delivered at the time of death.

#### **Trust Funds**

You pay the money directly to our Trust Company – Guaranteed Funeral Deposits of Canada (GFD), where it remains in our trust, and accrues interest until the contract is fulfilled (at the time of death) or the contract is cancelled.

## **Itemized Prices for Services & Supplies**

<b><u>Professional and Staff Services</u></b>	<b><u>Total Cost</u></b>
Basic Professional Services -	\$ 880.00
Arranging & Coordinating Rites & Rituals -	\$ 565.00
Visitation Staff -	\$ 150.00/Hour
Offsite Visitation Staff -	\$ 600.00
Ceremony Staff -	\$ 510.00
Graveside Staff & Equipment -	\$ 425.00
Graveside Chairs -	\$ 10.00/Chair
Graveside Sound System -	\$ 75.00
Reception Staff -	\$ 300.00/Hour
Embalming -	\$ 575.00
Basic Preparations -	\$ 475.00
Removal of pacemaker or medical implant -	\$ 100.00
Documentation -	\$ 525.00
Aftercare Services -	\$ 450.00
Online Services -	\$ 150.00
Live Stream/Video Record -	\$ 175.00
Staff & Vehicle For Spring Interment -	\$ 525.00
Scattering of Cremated Remains -	\$ 415.00
Decedent Care/Casketing -	\$ 245.00
Delayed Interment -	\$ 400.00
Placement of cremated remains in family urn -	\$ 100.00
Saturday Service -	\$ 400.00
Saturday Visitation -	\$ 50.00/Hour
Sunday/Statutory Holiday Service -	\$ 800.00
Sunday/Statutory Holiday Visitation -	\$ 100.00/Hour
Additional Proof of Death Certificates -	\$ 35.00/Certificate
Rush Cremation (24 Hours)	\$ 400.00
Rush Cremation (48 Hours)	\$ 300.00
Witness Cremation -	\$ 200.00
Delivery of Cremated Remains (First 40km)	\$ 175.00
Non-Permeable Body Pouch -	\$ 60.00

### **Facilities**

Sheltering/Preparation/Embalming -	\$ 230.00
General -	\$ 260.00
Visitation -	\$ 150.00/Hour
Offsite Visitation Equipment -	\$ 400.00
Reception -	\$ 200.00/Hour
Funeral/Memorial Day -	\$ 450.00
Chapel Service -	\$ 650.00
Extended Sheltering of Remains Per Day -	\$ 175.00
(Additional daily charge for everyday over 5 days of sheltering)	
Storage of Cremated Remains Per Month -	\$ 105.00
(First 30 Days of Storage No Charge)	



**Automobiles**

Local Transfer (First 40km) -	\$ 425.00
Utility Vehicles -	\$ 199.00
Clergy/Lead Car -	\$ 250.00
Pallbearers Car -	\$ 315.00
Funeral Coach -	\$ 475.00
Limousine -	\$ 385.00
Additional Mileage (After First 40km) -	\$ 2.50/km

\*Note- For each additional car excluding the Utility Vehicle is a 4 hour rental. Additional hours per vehicle will be charged out at -

\$ 100.00/Hour

**Merchandise****Stationery Package**

\$ 375.00

This package includes:  
 Unlimited Memorial Cards  
 Register Book  
 1 Memorial Candle  
 50 Personalized Thank You Cards  
 Signboard at Visitation or Funeral  
 Portfolio for Estate Documents

**Itemized Costs**

Graphic Design Fee (one time fee) -	\$ 35.00
Memorial Cards -	\$ 2.00/Card
Personalized Thank You Cards - (Pack of 25)	\$ 65.00
Register Book -	\$ 85.00
Memorial Candle -	\$ 65.00
Prayer Cards -	\$ 2.50/Card
Book Marks -	\$ 3.50/Mark
Bulletin Printing -	\$ 4.00/Per
Crucifix or Praying Hands Cross	\$ 30.00
Zohr Family Funeral Home Carrying Bag -	\$ 35.00

**Cemetery Division**

Opening and closing of full-size grave -	\$ 850.00
Opening and closing of urn grave -	\$ 250.00
Improper Marking of Grave -	\$ 400.00
- Additional Saturday fee -	\$ 75.00
- Additional Sunday fee -	\$ 250.00
- Additional Holiday fee -	\$ 400.00

## **Service Packages Offered For Your Convenience**

### **Remember Me Service Package**

This service is generally defined as a day of visitation with the cremated remains/urn or body present prior to the day of the service.

Typically hold 1.5 hours of visitation before making way to the church for service.

Following service the cremated remains/urn or body is taken to the cemetery for inurnment.

This includes use of the Urn Ark.

Premium Aftercare Services

Unlimited Proof of Death Certificates

Use of website for obituary and/or service details

#### **Professional and Staff Services**

#### **Total Cost**

Basic Professional Services -		\$ 880.00
Arranging & Coordinating Rites & Rituals -		\$ 565.00
Visitation Staff -	4 Hrs:	\$ 600.00
Ceremony Staff -		\$ 510.00
Graveside Staff & Equipment -		\$ 425.00
Embalming -		\$ 575.00
Documentation -		\$ 525.00
Decedent Care/Casketing -		\$ 245.00
Premium Aftercare -		Complimentary
Online Services -		Complimentary

#### **Facilities**

Sheltering/Preparation/Embalming -		\$ 230.00
General -		\$ 260.00
Visitation -	4 Hrs:	\$ 600.00
Funeral/Memorial Day -		\$ 450.00

#### **Automobiles**

Local Transfer (First 40km) -		\$ 425.00
Utility Vehicles -		\$ 199.00
Clergy/Lead Car -		\$ 250.00
Pallbearers Car -		\$ 315.00
Funeral Coach -		\$ 475.00
Limousine -		Complimentary

**Service Package**

**\$ 7,529.00**

***Package does not include tax (HST 13%), merchandise or other disbursements.  
Package is also subject to extras such as Removal of Pacemaker or Medical implant, Additional Mileage, Additional Storage of Body, Saturday, Sunday or Holiday Charge***

## **Gather With Me Service Package**

This service is generally defined as visitation with the body/cremated remains present on the day of the service.

Typically hold 1.5 hours of visitation before beginning service.

Following service the body is taken to the cemetery for interment of full body

Or taken to the crematorium for cremation and interment to follow

Premium Aftercare Services

Unlimited Proof of Death Certificates

Use of website for obituary and/or service details

### **Professional and Staff Services**

Basic Professional Services -	\$ 880.00
Arranging & Coordinating Rites & Rituals -	\$ 565.00
Ceremony Staff -	\$ 510.00
Graveside Staff & Equipment -	\$ 425.00
Embalming -	\$ 575.00
Documentation -	\$ 525.00
Decedent Care/Casketing -	\$ 245.00
Premium Aftercare -	Complimentary
Online Services -	Complimentary

### **Facilities**

Sheltering/Preparation/Embalming -	\$ 230.00
General -	\$ 260.00
Funeral/Memorial Day -	\$ 450.00

### **Automobiles**

Local Transfer (First 40km) -	\$ 425.00
Utility Vehicles -	\$ 199.00
Clergy/Lead Car -	\$ 250.00
Pallbearers Car -	\$ 315.00
Funeral Coach -	\$ 475.00
Limousine -	Complimentary

**Service Package**

**\$ 6,329.00**

***Package does not include tax (HST 13%), merchandise or other disbursements.  
Package is also subject to extras such as Removal of Pacemaker or Medical implant, Additional Mileage, Additional Storage of Body, Saturday, Sunday or Holiday Charge***

## **Graveside Service Package**

Gathering at the graveside with friends and family

\*Final goodbye allows for a period of 15 minutes with up to 5 family members to spend time with your loved one before cremation (\$475.00 less if opting out of this option)

Premium Aftercare Services

Unlimited Proof of Death Certificates

Use of website for obituary and/or service details

### **Professional and Staff Services**

Basic Professional Services -	\$ 880.00
Arranging & Coordinating Rites & Rituals -	\$ 565.00
Ceremony Staff -	\$ 510.00
Graveside Staff & Equipment -	\$ 425.00
*Basic Preparations -	\$ 475.00*
Documentation -	\$ 525.00
Decedent Care/Casketing -	\$ 245.00
Premium Aftercare -	Complimentary
Online Services -	Complimentary

### **Facilities**

Sheltering/Preparation/Embalming -	\$ 230.00
General -	\$ 260.00

### **Automobiles**

Local Transfer (First 40km) -	\$ 425.00
Utility Vehicles -	\$ 199.00
Funeral Coach -	\$ 475.00

<b>Service Package</b>	<b>\$ 5,214.00</b>
------------------------	--------------------

***Package does not include tax (HST 13%), merchandise or other disbursements.  
Package is also subject to extras such as Removal of Pacemaker or Medical implant, Additional Mileage, Additional Storage of Body, Saturday, Sunday or Holiday Charge***

## **Direct Cremation Service Package**

Our Estate Cremation package is defined as pick up from the place of death

The necessary documents (permits, forms) completed

\*Final goodbye allows for a period of 15 minutes with up to 5 family members to spend time with your loved one before cremation (\$475.00 less if opting out of this option)

Transportation to and from crematorium to return ashes to family in a temporary or selected urn

Premium Aftercare Services

Unlimited Proof of Death Certificates

Use of website for obituary and/or service details

### **Professional and Staff Services**

Basic Professional Services -

\$ 880.00

Documentation -

\$ 525.00

Decedent Care/Casketing -

\$ 245.00

\*Basic Preparations -

\$ 475.00\*

Premium Aftercare -

Complimentary

Online Services -

Complimentary

### **Facilities**

Sheltering/Preparation -

\$ 230.00

General -

\$ 260.00

### **Automobiles**

Local Transfer (First 40km) -

\$ 425.00

Utility Vehicles -

\$ 199.00

Mileage – To/from Crematorium -

Complimentary

**Service Package**

**\$ 3,239.00**

### **Disbursements**

Cremation Fee - Capital Crematorium -

\$ 895.00

Coroners Certificate -

\$ 75.00

Provincial Death Registration -

\$ 51.00

BAO Fee -

\$ 30.00

***Package does not include tax (HST 13%), merchandise or other disbursements.  
Package is also subject to extras such as Removal of Pacemaker or Medical implant, Additional  
Mileage, Additional Storage of Body, Saturday, Sunday or Holiday Charge***

## ***Our Selection of Caskets***

<u><b>Description</b></u>	<u><b>Total Cost</b></u>
<b>Y330029 Founders</b> by Victoriaville & Co. Veneer construction, beige crepe interior, reclaimed chestnut finish, designed specifically for cremation	\$ 1,760.00
<b>WE251 Natura</b> by Victoriaville & Co. Solid Poplar, Natural Finish Without Colour Treatment, 100% Natural Cotton, suitable for burial and cremation	\$ 2,499.00
<b>WR252 Melrose</b> by Victoriaville & Co. Solid Poplar and Veneer Components, Light Titian Colour Treatment, Satin Finish, White Crepe suitable for burial and cremation	\$ 2,684.00
<b>MR260 Payne Ebony Gold</b> by Aurora 20 Gauge Steel, Ebony Shaded Gold Finish, White Crepe, suitable for burial but not cremation	\$ 2,871.00
<b>WR255 Timberland</b> by Victoriaville & Co. Solid Pine, Natural Colour Treatment, Natural Finish, Tan Crepe suitable for burial and cremation	\$ 3,047.00
<b>WR232 Dayton Ash</b> by Victoriaville & Co. Solid ash top, gloss finish, crepe interior, changeable corners, brass polished hardware and suitable for burial and cremation	\$ 3,487.00
<b>MR250 Atlantic Blue</b> by Aurora 18 Gauge Steel Accoseal, Atlantic Blue Treatment, Acrylic Shaded Lustrous Finish, Light Blue Crepe suitable for burial but not cremation	\$ 4,125.00
<b>WR280 Accent Cedar</b> by Victoriaville & Co. Solid cedar, natural satin finish, tan crepe interior, swing handles suitable for burial and cremation	\$ 4,356.00
<b>WR220 Dominion</b> by Victoriaville & Co. Solid Maple, Rich Titian Colour Treatment, Hand-Rubbed High Gloss Finish, Tan Crepe, suitable for burial and cremation	\$ 4,381.00
<b>00100 Olympic Rose</b> by Aurora 18 Gauge Steel, White, Light Pink Velvet, suitable for burial but not cremation	\$ 4,576.00
<b>WR267 Seabrook</b> by Victoriaville & Co. Solid Pecan and Veneer Components, Pecan Texan Colour Treatment, Satin Finish, Tan Crepe, suitable for burial and cremation	\$ 4,650.00
<b>WR210 Dunfield</b> by Victoriaville & Co. Solid Red Oak, Shaded Persian Fawn Colour Treatment, Hand-Rubbed High Gloss Finish, Tan Crepe, suitable for burial and cremation	\$ 4,752.00

### ***Our Selection of Caskets***

<u><b>Description</b></u>	<u><b>Total Cost</b></u>
<b>1725 Cashmere</b> by Aurora Stainless Steel construction, velvet interior, Memory Safe Drawer, changeable corners, suitable for burial but not cremation	\$ 5,423.00
<b>WC265 Butternut</b> by Victoriaville & Co. Solid White Walnut, Honey Brown Colour Treatment, Lustrous Satin Finish, Beige Basket Weave, suitable for burial and cremation	\$ 5,445.00
<b>WR227 Briar Hill</b> by Victoriaville & Co. Solid birds eye maple and veneer components, autumn haze colour treatment, hand rubbed high gloss finish, beige basket weave interior, suitable for burial and cremation	\$ 5,880.00
<b>WR210 Parliament</b> by Victoriaville & Co. Solid Red Oak, Persian Fawn Colour Treatment, Prestige Hand-Rubbed High Gloss Finish, Beige Velvet, suitable for burial and cremation	\$ 7,921.00
<b>WC201 St. Patrick</b> by Victoriaville & Co. Solid African Mahogany, Traditional Titian Colour Treatment, Hand-Rubbed High Gloss Finish, Beige Velvet, suitable for burial and cremation	\$ 7,062.00
<b>20799 Capital</b> by Victoriaville & Co. Solid African Mahogany, Traditional Titian Colour Treatment, Prestige Hand-Rubbed High Gloss Finish, Beige Velvet, suitable for burial and cremation	\$7,790.00
<b>WR205 Bordeaux Cherry</b> by Victoriaville & Co. Solid Finest Cherrywood, Rich Garnet Colour Treatment, Prestige Hand-Rubbed High Gloss Finish, Beige Velvet, suitable for burial and cremation	\$ 8,890.00

### ***Our Selection of Cremation Containers***

<b>CR879 Glencove</b> by Victoriaville & Co. Cremation Container Select Wood, Natural Maple Woodgrain with pillow	\$ 525.00
<b>PV281 Westvale</b> by Victoriaville & Co. Veneer construction, beige crepe interior, amber pine finish.	\$ 999.00

## **Urn & Casket Burial Vaults**

Burial vaults although not mandatory by law are a necessary consideration when planning yours or your loved ones service. Burial vaults can protect against the deterioration of the casket/urn from both ground and water pressure

### **Urn Vaults**

<b>Pebblecove</b> by Batesville Casket Company Composite construction with handles and Hex locking system	\$ 913.00
<b>Charleston</b> by Batesville Casket Company Composite construction with handles, bronze plate with personalization included, includes choice of Life Stories keepsake, Hex locking system with rubber lid gasket	\$ 1,135.00
<b>Athenian</b> by Doric Solid concrete, double reinforced with strong corrosion-resistant stainless steel and high impact ABS fiberlon. Custom nameplate personalization included,	\$ 1,582.00

### **Casket Vaults**

<b>Delphi</b> by Doric Vault Company Solid concrete container, unlined, painted gold	\$ 1,628.00
<b>Titan</b> by Doric Vault Company Solid concrete, polystyrene liner, copper pebble finish	\$ 2,180.00
<b>Patrician</b> by Doric Vault Company Solid concert, ABS liner, marble look with church viewing window	\$ 2,933.00
<b>Athenian</b> by Doric Vault Company Solid concrete, ABS liner and stainless steal lined black pebble finish or rose (pink)	\$ 3,785.00





## **Our Selection of Urns**

*Unless otherwise specified, all urns are standard size ranging from 190 – 220 cubic inches inside*

### **Urn Ark**

Dignified, respectful and honourable way to transport your loved ones cremated remains for services. The Urn Ark allows the use of pallbearers during a Memorial Service at church, in the chapel or at the cemetery.



<b>Milan</b> by Batesville Casket Company 100059 - Cast in solid bronze with bushed finish Engraving personalization available (text only)	\$1,789.00
<b>Cocoa Mantle Clock</b> by Batesville Casket Company 235699 - Hardwood construction with dark stain and satin finish Howard Miller quartz movement clock Engraving on brushed nickel plate	\$ 999.00
<b>Mason Cherry</b> by Batesville Casket Company 220317 - Crafted in cherry with light cherry stain Interchangeable LifeSymbols Engraving personalization available	\$ 1,155.00
<b>Vertical Brushed Bronze</b> by Batesville Casket Company 235554 - Constructed from 64oz sheet bronze Interchangeable LifeSymbols Engraving personalization available	\$ 891.00
<b>Monroe Oak</b> by Batesville Casket Company 185842 - Crafted in oak with satin finish Engraving personalization available	\$ 699.00
<b>Bradbury</b> by Batesville Casket Company 208692 - Crafted in pecan with light pecan finish Interchangeable LifeSymbols Engraving personalization available	\$ 925.00
<b>Franklin Cherry</b> by Batesville Casket Company 185841 - Crafted in cherry with satin finish Engraving personalization available	\$ 746.00

## **Our Selection of Urns**

*Unless otherwise specific, all urns are standard size ranging from 190 – 220 cubic inches inside*

<b>Ashen Pewter</b> by Batesville Casket Company 205396 - Handcrafted in brass with polished accents Engraving personalization available	\$ 525.00
<b>Amber Butterfly</b> by Batesville Casket Company 270111 - Handcrafted from copper Hand applied enamel finish	\$ 535.00
<b>Alpine White Marble</b> by Batesville Casket Company 258671 - Constructed of durable composite material with marbleized finish Engraving personalization available	\$ 622.00
<b>Stained Hardwood</b> by Batesville Casket Company 148339 - Hardwood construction with satin finish Engraving personalization available	\$ 273.00
<b>Bennington Rustic</b> by Batesville Casket Company 272045 - Crafted with distressed reclaimed lumber	\$ 313.00
<b>Honey Brown</b> by Batesville Casket Company 255815 - Engineered and solid wood construction Engraving personalization available	\$ 368.00
<b>Mocha Hardwood</b> by Batesville Casket Company 255701 - Hardwood construction with dark stain and satin finish Engraving personalization available	\$ 273.00
<b>Painted Steel Chest</b> by Batesville Casket Company 148331 - Constructed of 20 gauge carbon steel with a painted finish	\$ 317.00
<b>Basic Urn</b> by Batesville Casket Company 144682 - Particleboard construction with grey vinyl cover	\$ 249.00
<b>Delphia Wings</b> by Batesville Casket Company 235716 - Handcrafted in brass with polished accents Engraving personalization available	\$ 525.00

***Think Earth Friendly With  
Biodegradable Urns Provided By  
Zohr Family Funeral Home***

<b>Eco Tree Urn</b> by Victoriaville & Co. TU-240 - Coffee grounds, dolomite lime and natural clay with choice of seeds to turn your cremated remains into a tree. Catalpa Speciosa (Deciduous) Black Locust (Deciduous) Scots Pine (Evergreen)	\$ 539.00
<b>Footprints In The Sand</b> by Victoriaville & Co. UR-8004 - Made with sand and clay designed for dignified water scattering of cremated remains (KS-8004 - Matching Keepsake \$179.00)	\$ 869.00
<b>Hemp Square</b> by Victoriaville & Co. UR-8000 - Biodegradable square made with hemp (KS-8000 - Matching Keepsake \$129.00)	\$ 330.00
<b>Scattering Tube</b> by Victoriaville & Co. UR-8103 - Biodegradeable paper engineered to simplify the scattering process (KS-8103 - Matching Keepsake \$85.00)	\$ 185.00



# Zohr Family Funeral Home Locations

Proud To Serve Renfrew County and Our Communities

## **Zohr Family Funeral Home, Killaloe**

11 Lake Street  
P.O. Box 56  
Killaloe, Ontario  
K0J 2A0

## **Zohr Family Funeral Home, Eganville**

194 Jane Street  
P.O. Box 758  
Eganville, Ontario  
K0J 1T0

## **Zohr Family Funeral Home, Renfrew**

85 Munroe Avenue East  
Renfrew, Ontario  
K7V 3K2

## **Renfrew County Cremation Service**

22 Raglan Street South  
Renfrew, Ontario  
K7V 1P7

## Our Caring Staff

### **Dustin Zohr**

Owner, Funeral Director  
dustin@zohrfuneralhome.com

### **Grady Zohr**

Funeral Director  
grady@zohrfuneralhome.com

### **Madison McLean**

Funeral Director  
madison@zohrfuneralhome.com

### **Wyatt Zohr**

Cemetery Division Manager  
wyatt@zohrfuneralhome.com

### **Douglas Welk**

Funeral Director Assistant

### **Ryan Leonard**

Funeral Director Assistant

### **Lorenz Zohr**

Owner, Funeral Director

### **Jane Zohr**

Owner

### **Ashley Cybulski**

Aftercare Specialist  
ashley@zohrfuneralhome.com